

Dual Mode class in Graph Theory.

Section 001 - in classroom.

Notes in PDF. (? no notes in class?)

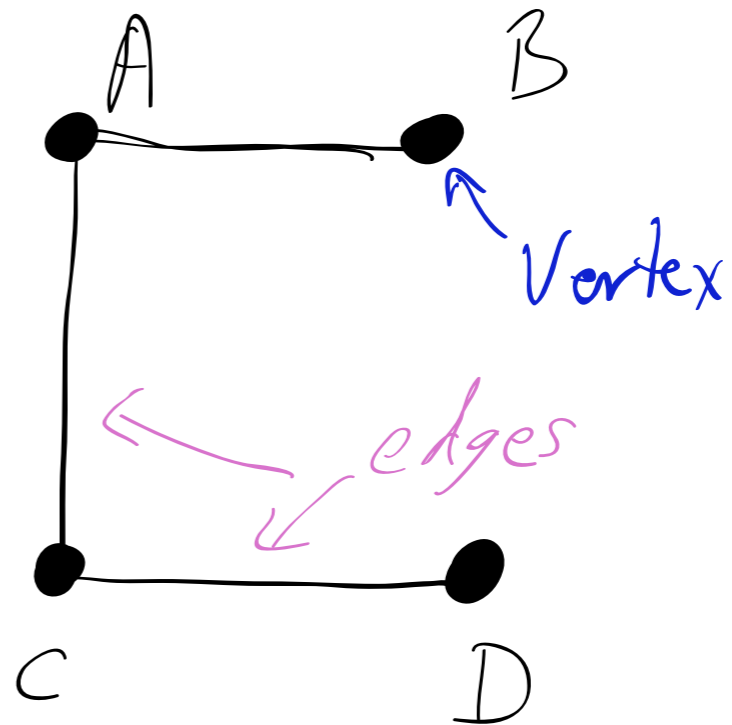
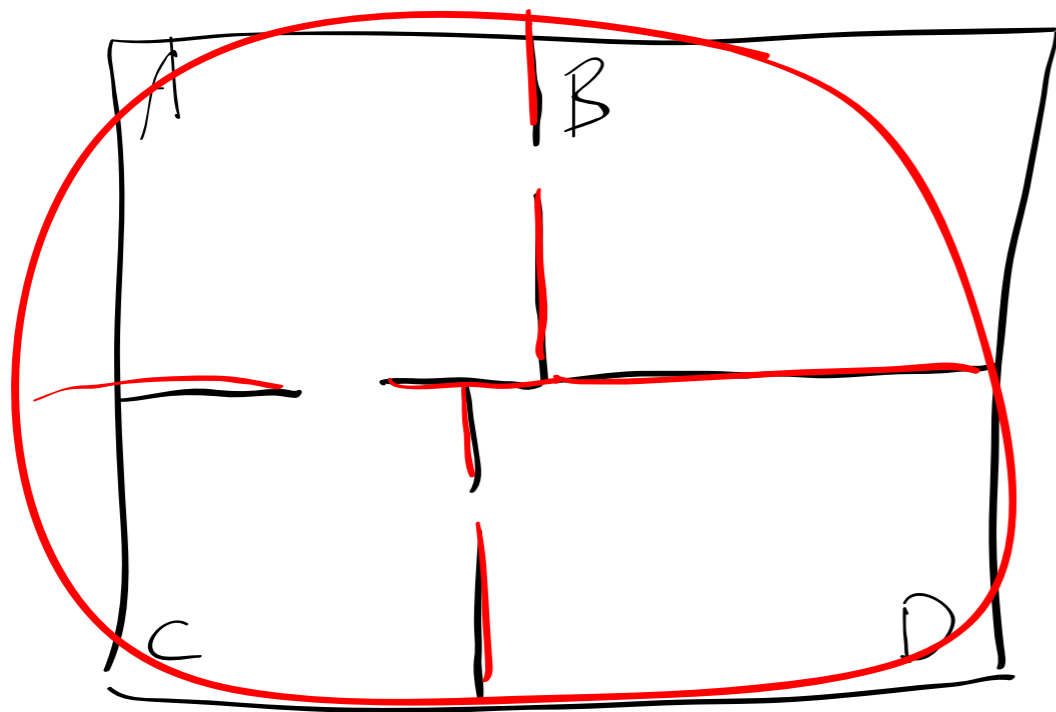
Section 400 - on-the-web.

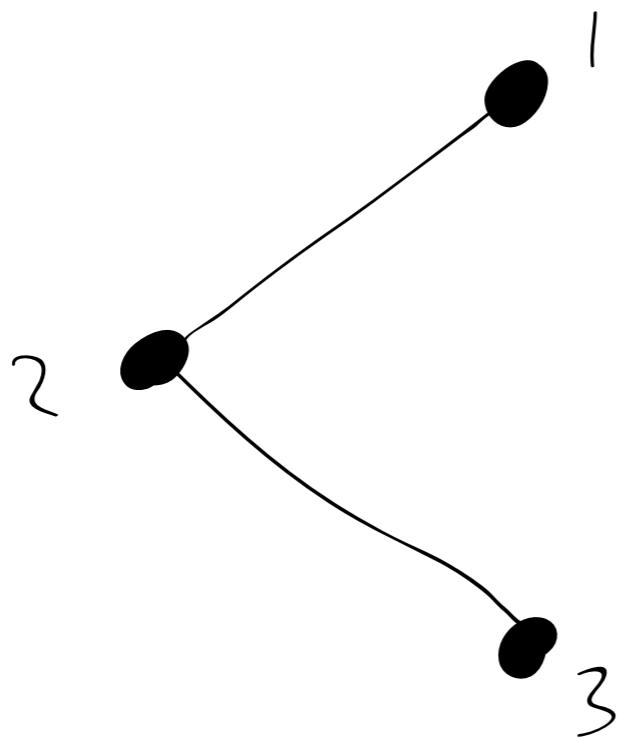
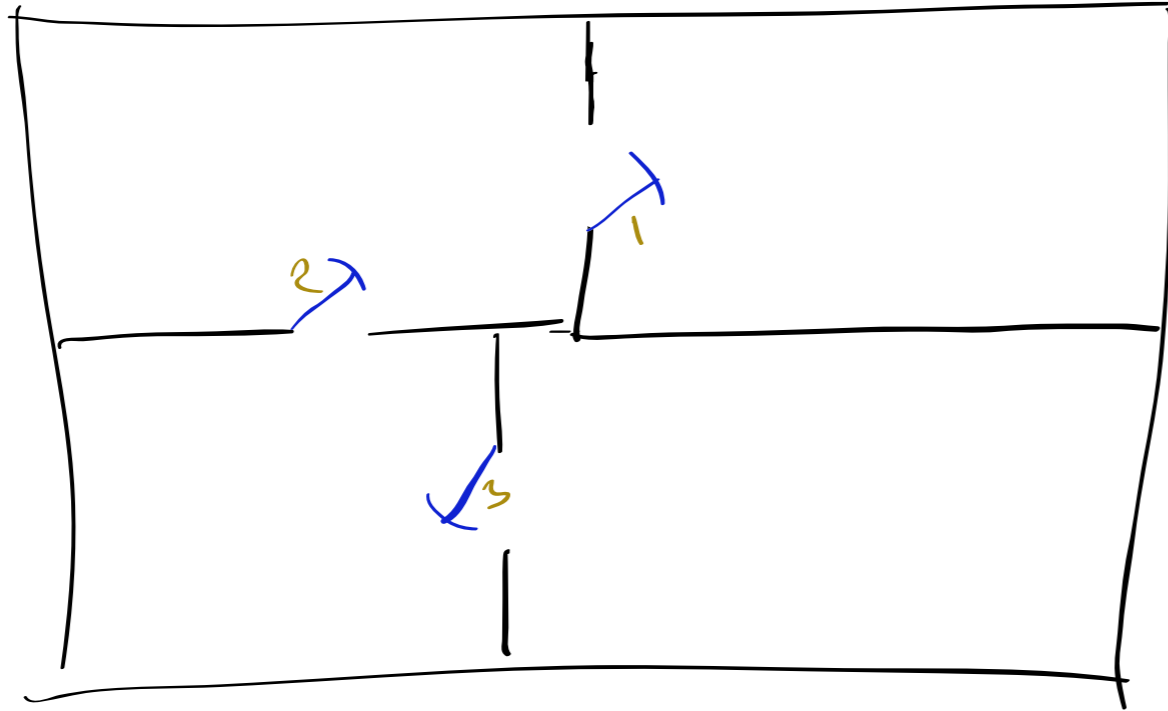
Off the book - use notes

Office hrs: MWF - 11-12. 277-4938

What is a graph?

An abstract connection diagram.





Finite graphs, (mostly)

?



isomorphism

